

FOR LEASE

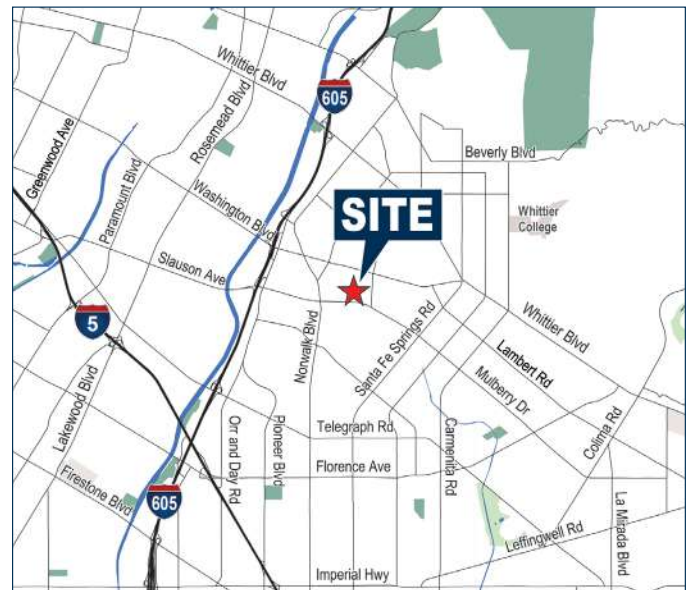
± 5,293 SF INDUSTRIAL BUILDING

8328 ALLPORT AVE, UNIT B, SANTA FE SPRINGS, CA



PROPERTY FEATURES

- ± 5,293 SF Industrial Unit Part of a Larger Building
- ± 750 SF Office Space
- 1 Oversized Ground Level Door (14' x 12')
- 14' Minimum Warehouse Clearance
- Clear Span Warehouse
- 200A, 3 Phase Power (Verify)
- Fully Renovated and Available Immediately
- Competitive Gross Lease Rate
- Access to Multiple Nearby Freeways, Including



Exclusively Offered By:

Voit

REAL ESTATE SERVICES

2020 Main Street, Suite 100 | Irvine, CA 92614
License #01991785 www.voitco.com



LOREN CARGILE
Vice President | Partner
License #01431329

(714) 935-2306
LCargile@voitco.com



MIKE CARGILE
Senior VP | Partner
License #00491668

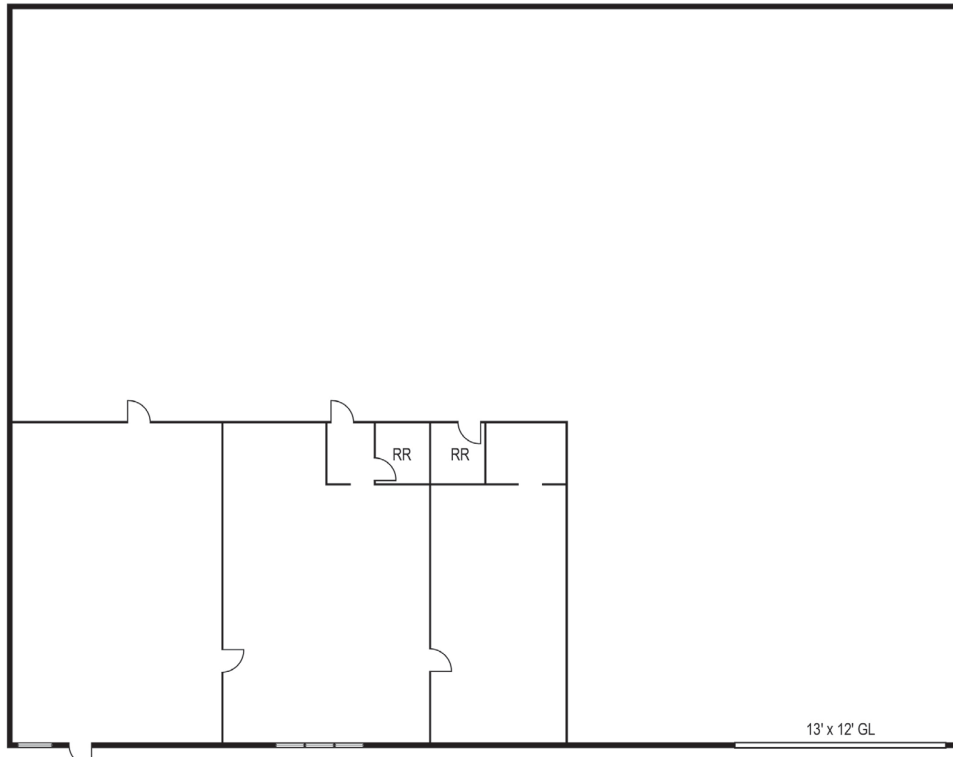
(949) 263-5338
MCargile@voitco.com

8328 ALLPORT AVE, UNIT B, SANTA FE SPRINGS, CA

AERIAL



FLOOR PLAN



Exclusively Offered By:

Voit

REAL ESTATE SERVICES

2020 Main Street, Suite 100 | Irvine, CA 92614
License #01991785 www.voidco.com



LOREN CARGILE
Vice President | Partner
License #01431329

(714) 935-2306
LCargile@voitco.com



MIKE CARGILE
Senior VP | Partner
License #00491668

(949) 263-5338
MCargile@voitco.com

8328 ALLPORT AVE, UNIT B, SANTA FE SPRINGS, CA

INTERIOR PHOTOS



Exclusively Offered By:

Voit

REAL ESTATE SERVICES

2020 Main Street, Suite 100 | Irvine, CA 92614
License #01991785 www.voitco.com



LOREN CARGILE
Vice President | Partner
License #01431329

(714) 935-2306
LCargile@voitco.com



MIKE CARGILE
Senior VP | Partner
License #00491668

(949) 263-5338
MCargile@voitco.com