

FOR LEASE

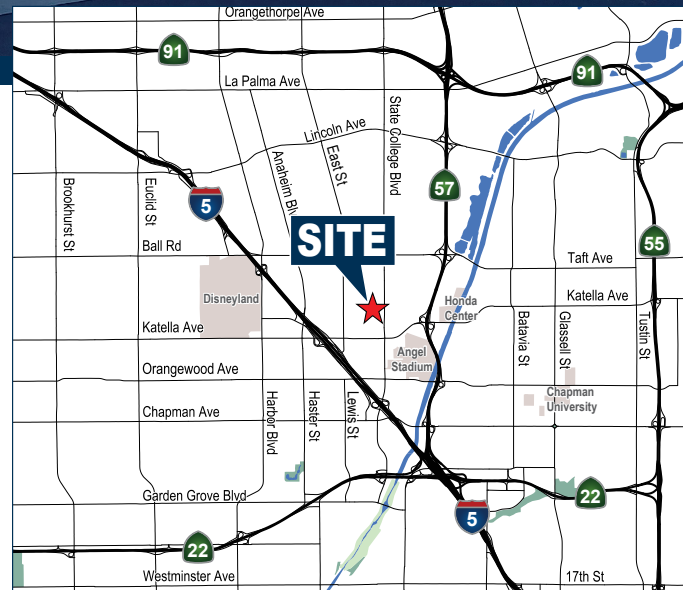
±13,500 SF FREESTANDING INDUSTRIAL PROPERTY

1567 S STATE COLLEGE BLVD | ANAHEIM, CA



PROPERTY FEATURES

- Highly Desirable "Tile Mile" Location
- ± 13,500 SF Freestanding Building
- ± 2,585 SF of Office
- Large Fenced Yard
- Shop Restrooms
- 400 Amps of 120/208 Voltage
- Fully Fire Sprinklered
- Excellent Access to the 5, 57, 91 and 22 Freeways
- Three Ground Level Doors (One Oversized Door)
- **Major Renovation Completed**



Exclusively Offered By:

Voit

REAL ESTATE SERVICES

2400 E. Katella Avenue, Suite 750 | Anaheim, CA 92806
License #01991785 www.voitco.com



LOREN CARGILE
Vice President | Partner
License #01431329

(714) 935-2306
LCargile@voitco.com

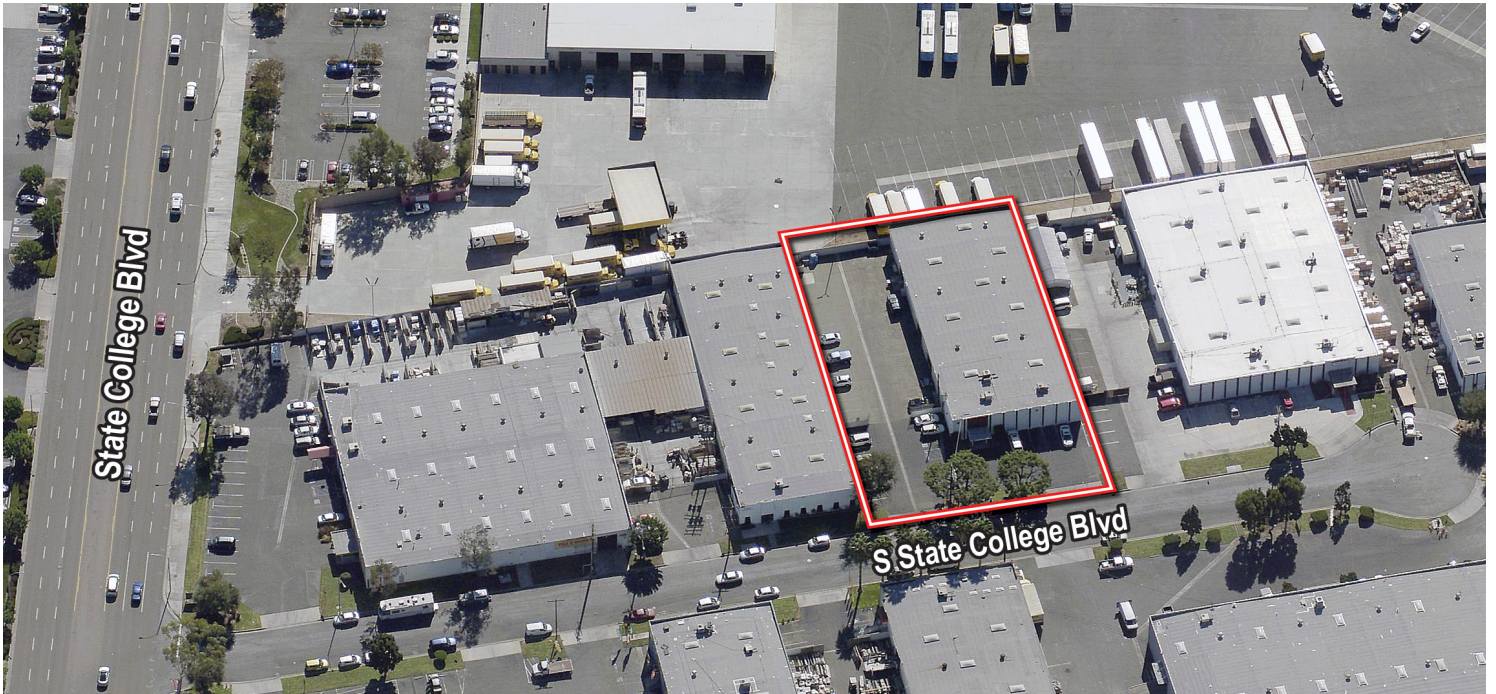


MIKE CARGILE
Senior VP | Partner
License #00491668

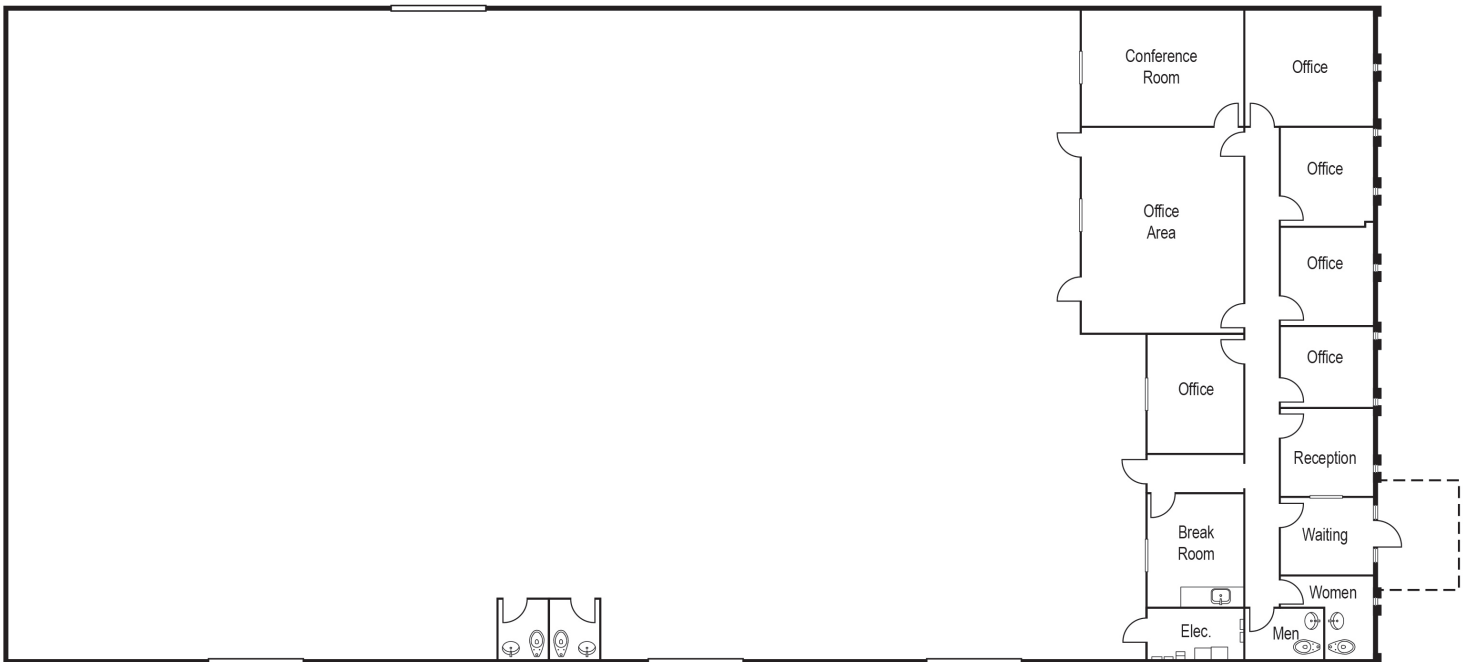
(949) 263-5338
MCargile@voitco.com

1567 S STATE COLLEGE BLVD | ANAHEIM, CA

AERIAL



FLOOR PLAN



Exclusively Offered By:



REAL ESTATE SERVICES

2400 E. Katella Avenue, Suite 750 | Anaheim, CA 92806
License #01991785 www.voitco.com



LOREN CARGILE
Vice President | Partner
License #01431329

(714) 935-2306
LCargile@voitco.com



MIKE CARGILE
Senior VP | Partner
License #00491668

(949) 263-5338
MCargile@voitco.com

PROPERTY PHOTOS



**LARGE
SECURED
YARD AREA**



**RENOVATED
INTERIOR**

Exclusively Offered By:

Voit

REAL ESTATE SERVICES

2400 E. Katella Avenue, Suite 750 | Anaheim, CA 92806
License #01991785

www.voitco.com



LOREN CARGILE
Vice President | Partner
License #01431329

(714) 935-2306
LCargile@voitco.com



MIKE CARGILE
Senior VP | Partner
License #00491668

(949) 263-5338
MCargile@voitco.com