





FOR LEASE

± 22,218 SF INDUSTRIAL BUILDING

12234 LOS NIETOS ROAD, SANTA FE SPRINGS, CA



PROPERTY FEATURES

- ± 22,218 SF Freestanding Industrial Building
- Large Fully Secured Concrete Yard (1.26 Acre Parcel)
- ± 4,200 SF Two-Story Office Space
- 6 DH Loading Positions with 3 Loading Levelers
- 2 GL Ramps
- 22' Minimum Warehouse Clearance
- Fire Sprinklers
- 400A, 277/480 V 3 Phase Power (Verify)
- Access to Multiple Nearby Freeways, Including , ,  & 
- Available January 1, 2023



Exclusively Offered By:



REAL ESTATE SERVICES
2020 Main Street, Suite 100 | Irvine, CA 92614
License #01991785 www.voitco.com



LOREN CARGILE
Vice President | Partner
License #01431329

(714) 935-2306
LCargile@voitco.com

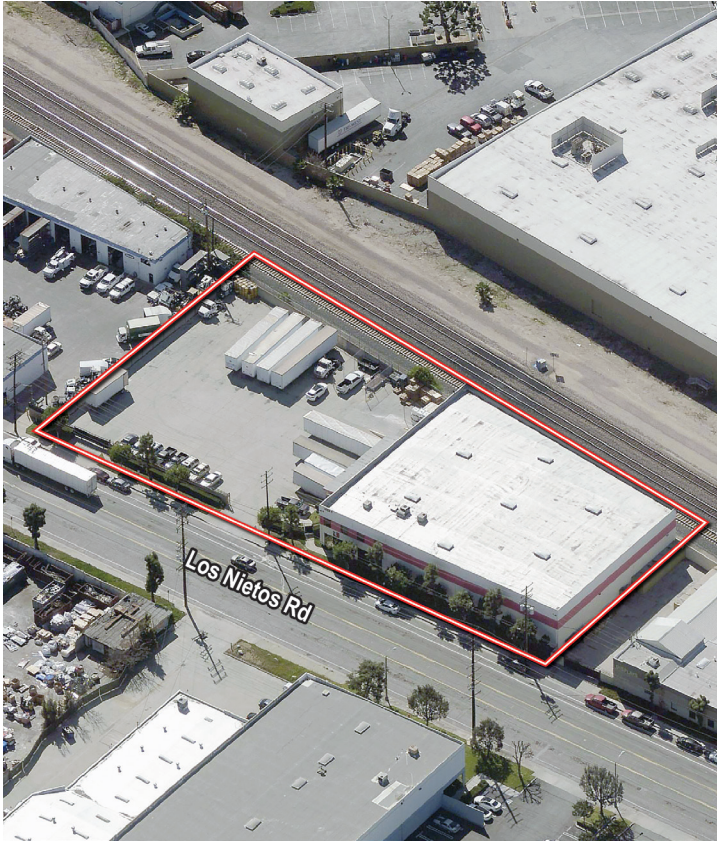


MIKE CARGILE
Senior VP | Partner
License #00491668

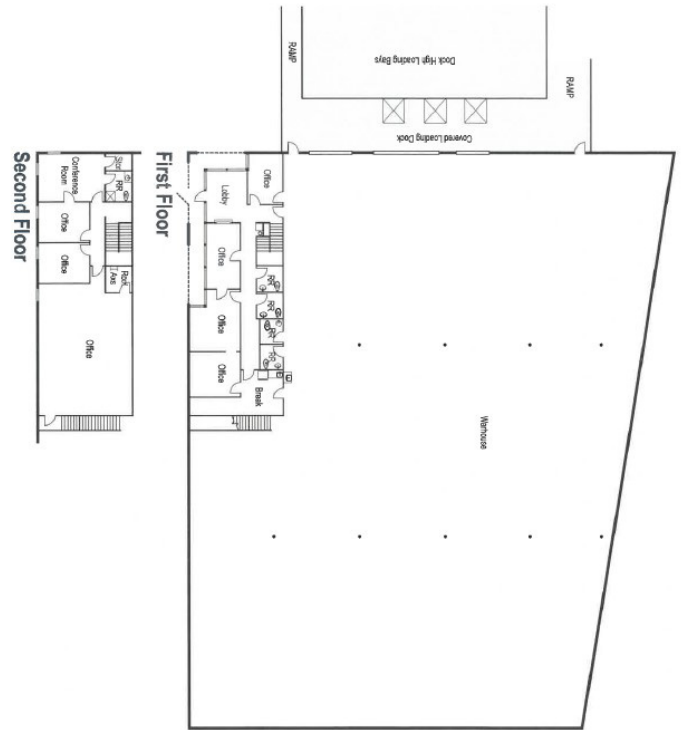
(949) 263-5338
MCargile@voitco.com

12234 LOS NIETOS ROAD, SANTA FE SPRINGS, CA

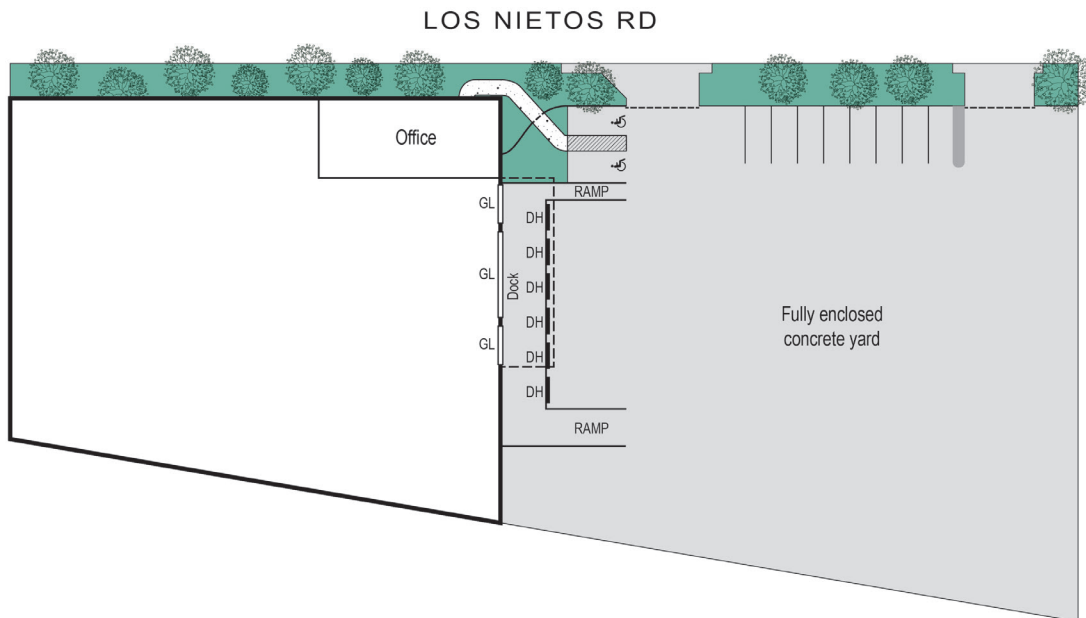
AERIAL



STREET VIEW



SITE PLAN



Exclusively Offered By:

Voit

REAL ESTATE SERVICES

2020 Main Street, Suite 100 | Irvine, CA 92614
License #01991785 www.voitco.com



LOREN CARGILE

Vice President | Partner
License #01431329

(714) 935-2306

LCargile@voitco.com



MIKE CARGILE

Senior VP | Partner
License #00491668

(949) 263-5338

MCargile@voitco.com